

SMOKE RATED ROLLING DOOR

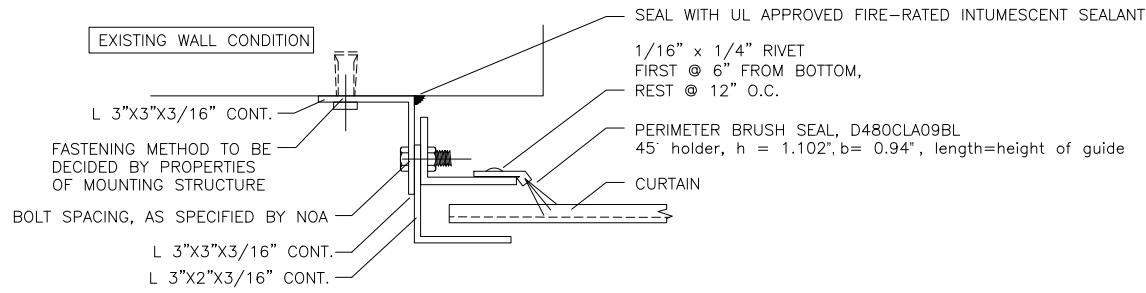
PRODUCT: MODEL SMOKE-45

D-1: STEEL ANGLE Z-GUIDE

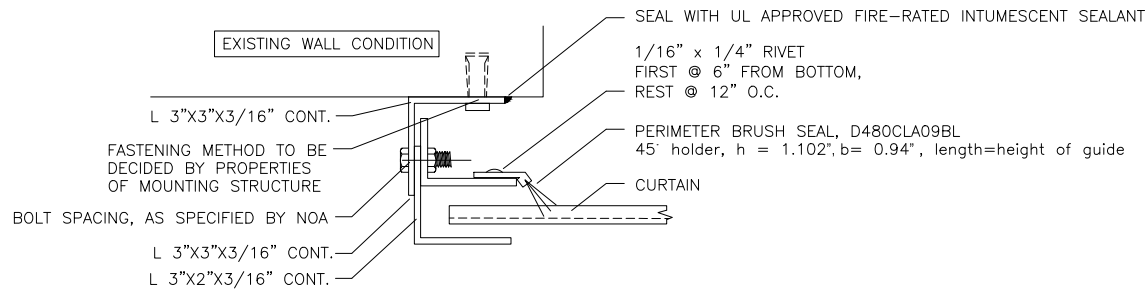
D-2: STEEL ANGLE E-GUIDE

D-3: STEEL ANGLE F-GUIDE

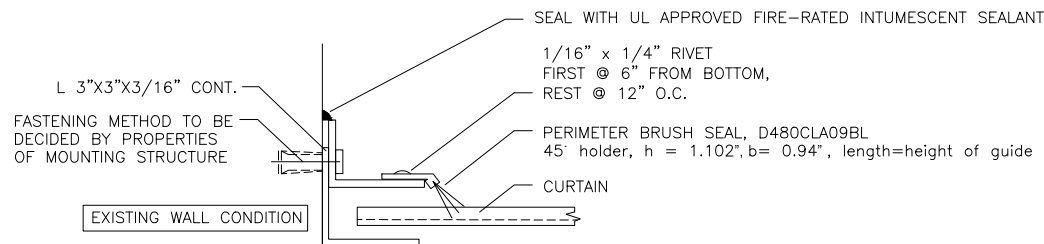
| | |
|------------------|----------------------|
| DATE: 03/23/2015 | SCALE: N.T.S. |
| REV: 04/08/2015 | DWG NO: 032315 - 002 |



1 DETAIL - STEEL ANGLE Z-GUIDE



2 DETAIL - STEEL ANGLE E-GUIDE



3 DETAIL - STEEL ANGLE F-GUIDE

SMOKE RATED ROLLING DOOR

PRODUCT: MODEL SMOKE-45

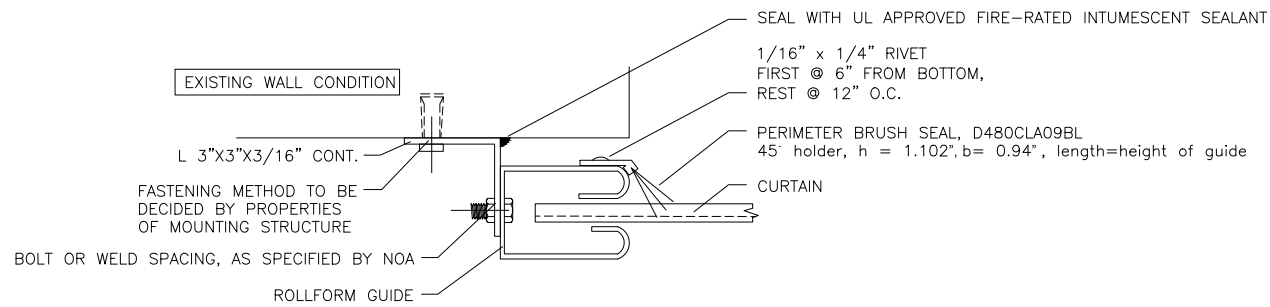
D-4: ROLLFORM Z-GUIDE

D-5: ROLLFORM E-GUIDE

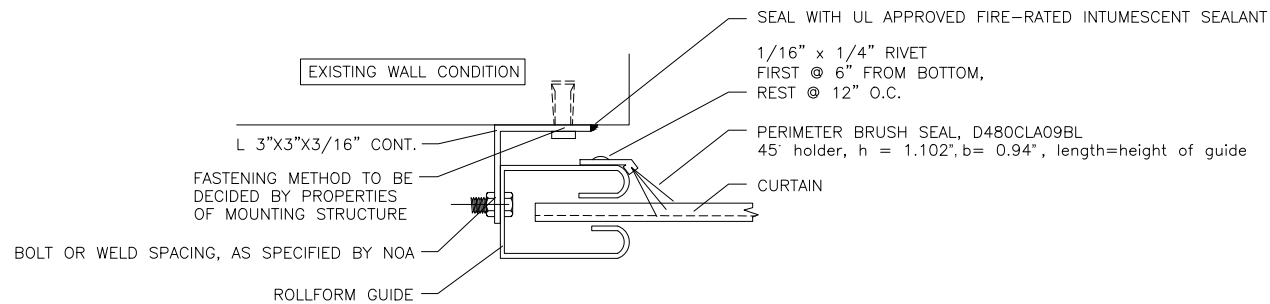
D-6: ROLLFORM F-GUIDE

DATE: 03/23/2015 SCALE: N.T.S.

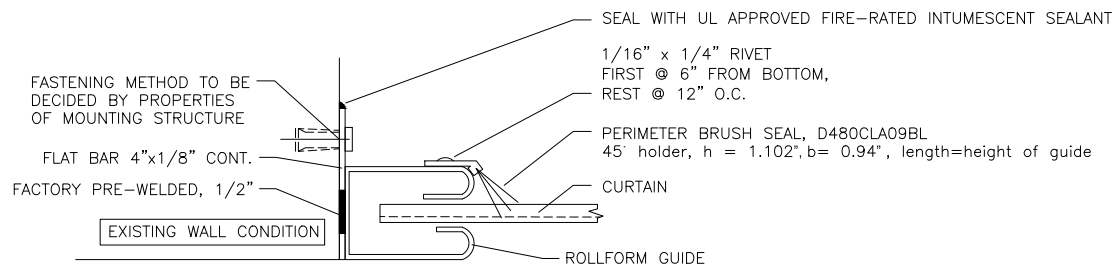
REV: 04/08/2015 DWG NO: 032315 - 002



4 DETAIL - ROLLFORM Z-GUIDE



5 DETAIL - ROLLFORM Z-GUIDE



6 DETAIL - STEEL ANGLE F-GUIDE

SMOKE RATED ROLLING DOOR

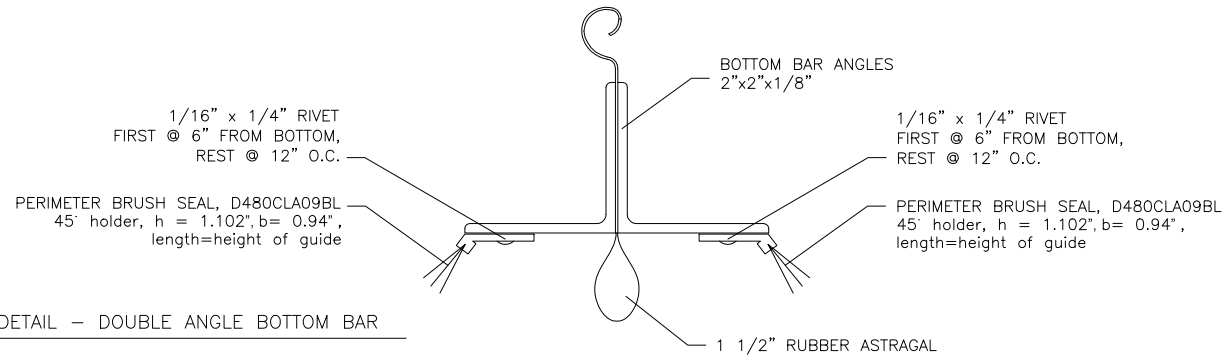
PRODUCT: MODEL SMOKE-45

D-7: DOUBLE ANGLE BOTTOM BAR

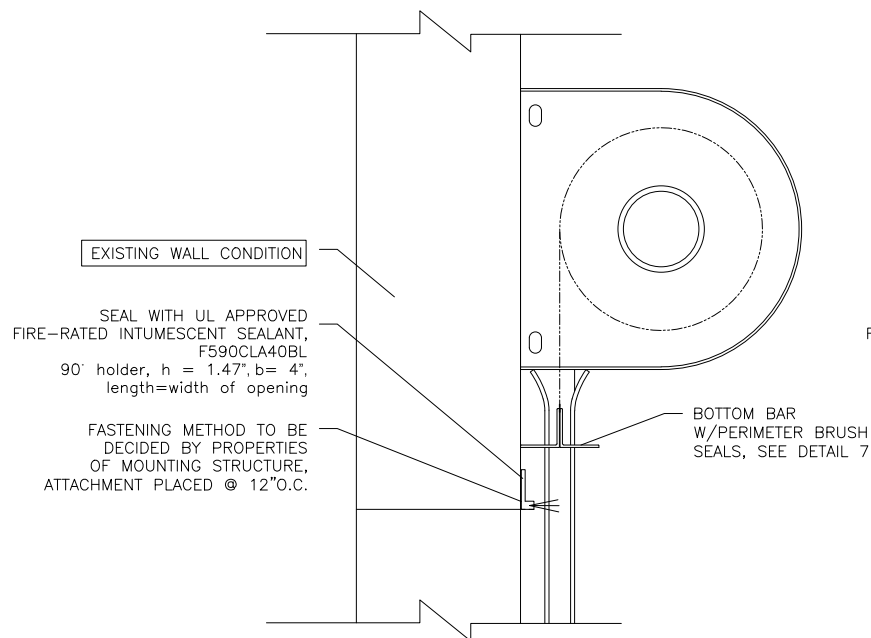
D-8: HEADER WITHOUT MOTOR

D-9: HEADER WITH MOTOR

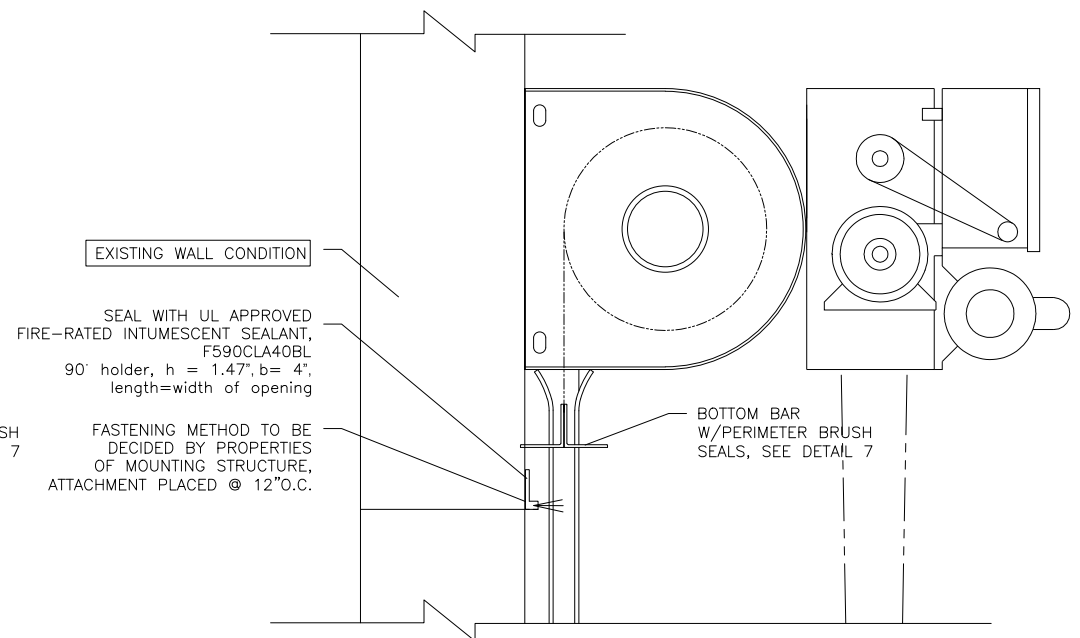
| | |
|------------------|----------------------|
| DATE: 03/23/2015 | SCALE: N.T.S. |
| REV: 04/08/2015 | DWG NO: 032315 - 003 |



7 DETAIL - DOUBLE ANGLE BOTTOM BAR



8 DETAIL - COIL AND HEADER W/O MOTOR
CHAIN, CRANK OR MANUAL OPERATION



9 DETAIL - COIL AND HEADER WITH MOTOR

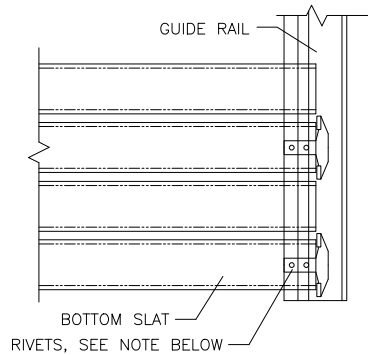
SMOKE RATED ROLLING DOOR

PRODUCT: MODEL SMOKE-45

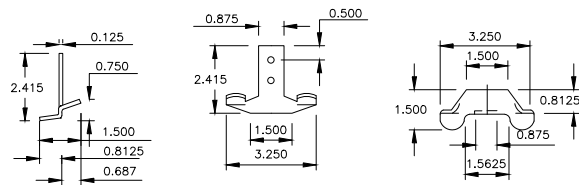
D-10: WINDLOCKS

TABLE A: LEAKAGE RATING TABLE

| | | | |
|-------|------------|---------|--------------|
| DATE: | 03/23/2015 | SCALE: | N.T.S. |
| REV: | 04/08/2015 | DWG NO: | 032315 - 004 |



- WINDLOCKS 11 GA PLATED STEEL. ASTM A-1011
- ALL RIVETS TO BE A.I.S.I. 1035 STEEL, CADMIUM PLATED, STAINLESS STEEL OR ZINC PLATED W/FY=37,000 PSI.



10 DETAIL - WINDLOCKS

A LEAKAGE RATING ASSEMBLY TABLE

| Pressure (in. of WC) | Air Temp, °F | Leakage | Closing Force, lb | Artificial Bottom Seal |
|----------------------|--------------|---------|-------------------|------------------------|
| 0.05 | Ambient | 1.3 | N/A | Yes |
| 0.10 | Ambient | 2.5 | N/A | Yes |
| 0.20 | Ambient | 4.8 | N/A | Yes |
| 0.30 | Ambient | 7.8 | N/A | Yes |
| 0.05 | 400 | 0.7 | N/A | Yes |
| 0.10 | 400 | 1.2 | N/A | Yes |
| 0.20 | 400 | 2.3 | N/A | Yes |
| 0.30 | 400 | 2.9 | N/A | Yes |
| 0.05 | Ambient | 1.5 | N/A | No |
| 0.10 | Ambient | 2.6 | N/A | No |
| 0.20 | Ambient | 4.9 | N/A | No |
| 0.30 | Ambient | 7.3 | N/A | No |
| 0.05 | 400 | 0.6 | N/A | No |
| 0.10 | 400 | 1.1 | N/A | No |
| 0.20 | 400 | 2.2 | N/A | No |
| 0.30 | 400 | 2.8 | N/A | No |