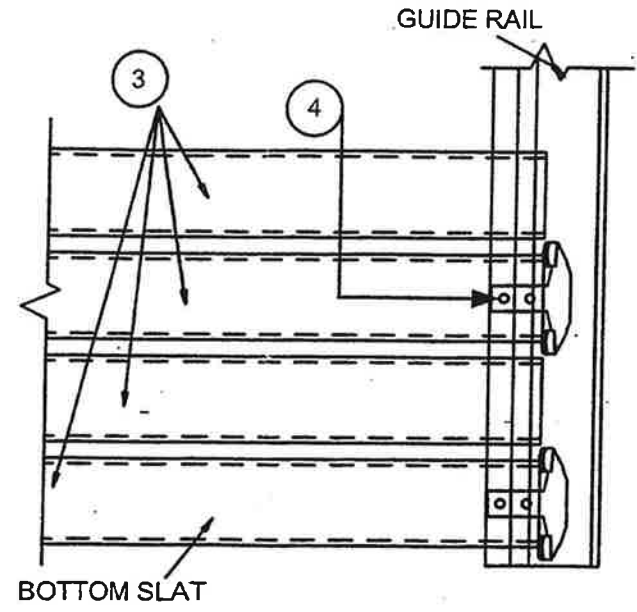
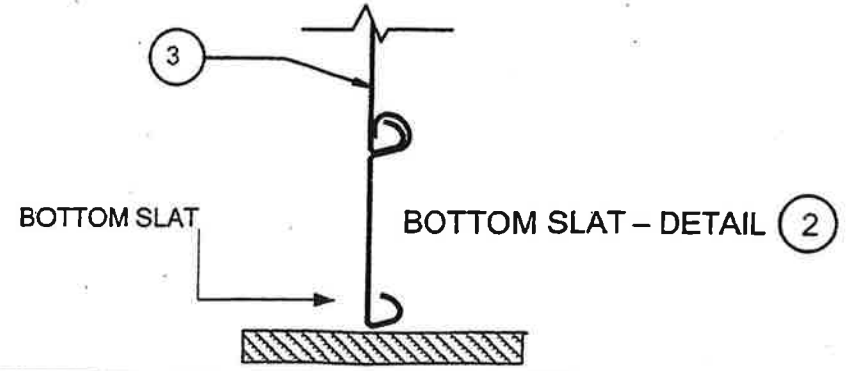


FLAT SLAT - DETAIL 3



ELEVATION - DETAIL 1

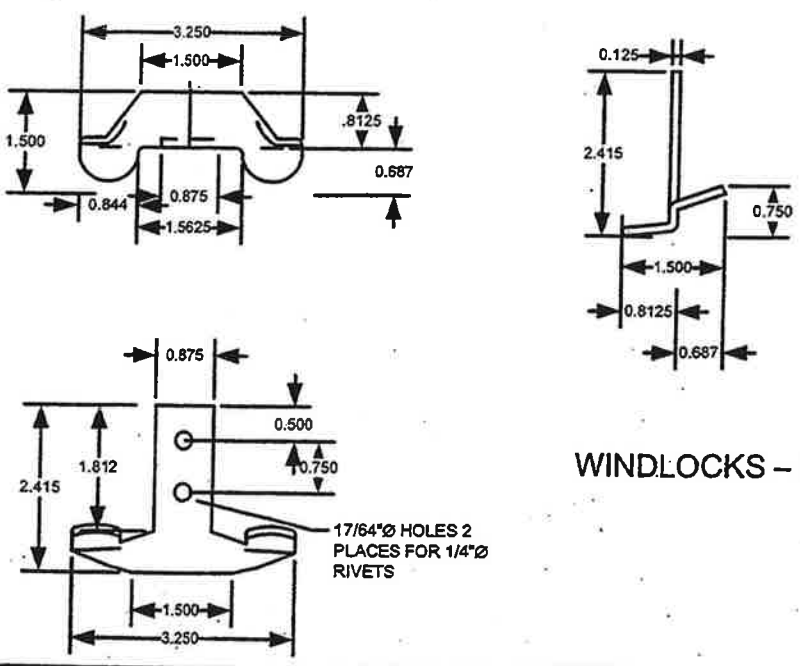


GENERAL NOTES:

- 1- THE ROLL-UP DOOR SHOWN ON THIS PRODUCT APPROVAL DOCUMENT HAS BEEN DESIGNED IN ACCORDANCE WITH THE 2007 EDITION OF THE FLORIDA BUILDING CODE. REQUIRED DESIGN WIND LOADS SHALL BE DETERMINED AS PER SECTION 1620 & 1609 OF THE FBC, FOR A BASIC WIND SPEED OF 146 M.P.H.
- THE ROLL-UP DOOR'S ADEQUACY FOR WIND PRESSURE, IMPACT AND FATIGUE RESISTANCE HAS BEEN VERIFIED IN ACCORDANCE WITH THE 2007 TEST PROTOCOLS FOR HIGH VELOCITY HURRICANE ZONES, TAS-201, TAS-202 & TAS-203.

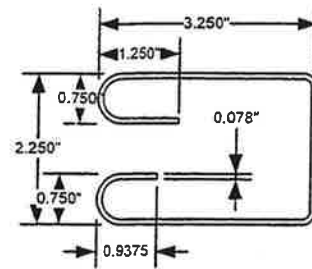
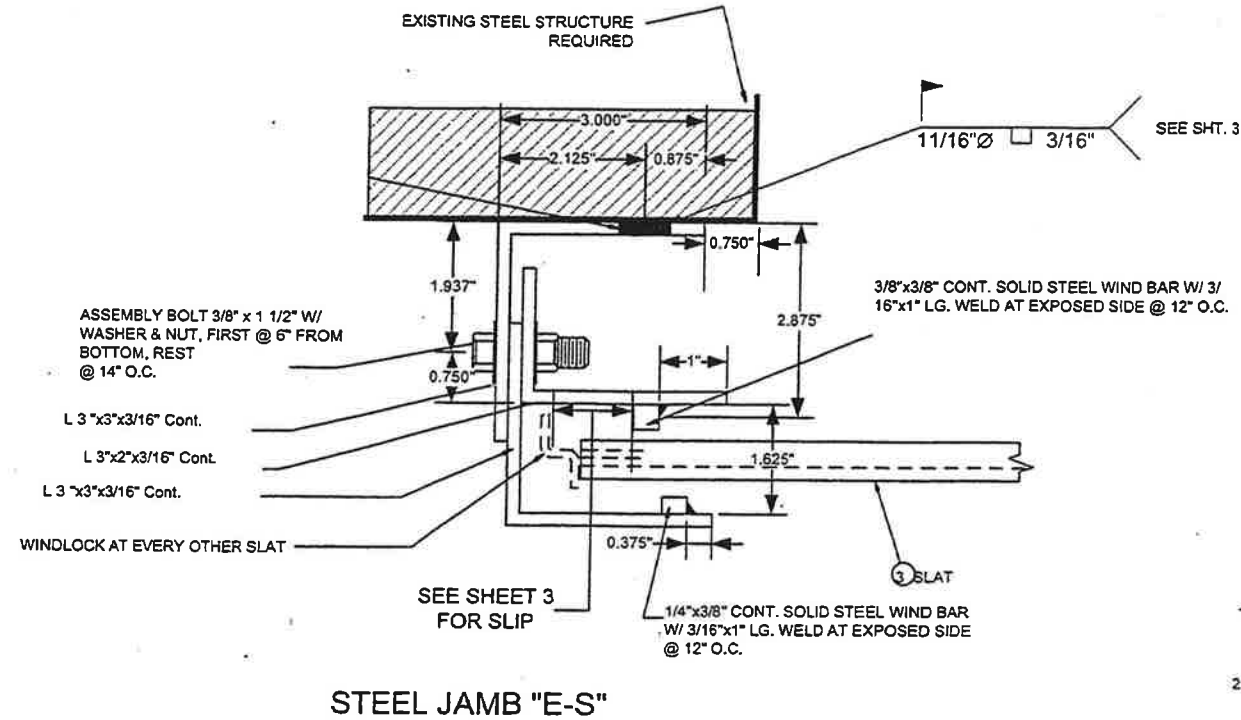
DESIGN PRESSURE RATING: +60.0, -65.0 PSF

- 2- SLAT TO BE A.S.T.M. A-653 GR 50 STRUCTURAL QUALITY STEEL WITH MIN. FY = 50 KSI AND G-90 GALVANIZING PER A.S.T.M. A-653, OR A.I.S.I. 304 SERIES STAINLESS STEEL MANUFACTURED WITH A MINIMUM YIELD STRENGTH OF FY = 50 KSI.
- 3- WINDLOCKS 11 GA PLATED STEEL. ASTM A-1011
- 4- ALL ASSEMBLY BOLTS TO BE S.A.E. GRADE 2 CADMIUM PLATED OR GALVANIZED STEEL.
- 5- ALL RIVETS TO BE A.I.S.I. 1035 STEEL, CADMIUM PLATED, STAINLESS STEEL OR ZINC PLATED W/ FY= 37,000 PSI.
- 6- INSULATION MATERIAL SHALL BE EPS-EXPANDED POLYSTYRENE INSULATION MANUFACTURED BY DYPLAST PRODUCTS LLC COMPANY, DADE COUNTY NOTICE OF ACCEPTANCE # 07-1107.08.
- 7- DOOR MAY BE INSTALLED ON THE INSIDE OR OUTSIDE OF AN EXTERIOR WALL. DOOR IMPACTED ON BOTH SIDE.
- 8- GUIDE DETAILS CAN BE USED IN ANY COMBINATION.
- 9- CONTRACTOR TO BE RESPONSIBLE FOR THE SELECTION, PURCHASE AND INSTALLATION OF THIS PRODUCT BASED ON THIS PRODUCT APPROVAL DOCUMENT. THE CONTRACTOR SHALL ENSURE THAT THE WALL CAN SUPPORT THE JAMB FORCES INDICATE ON THIS DOCUMENT. CONSTRUCTION SAFETY AT SITE IS THE CONTRACTOR'S RESPONSIBILITY.

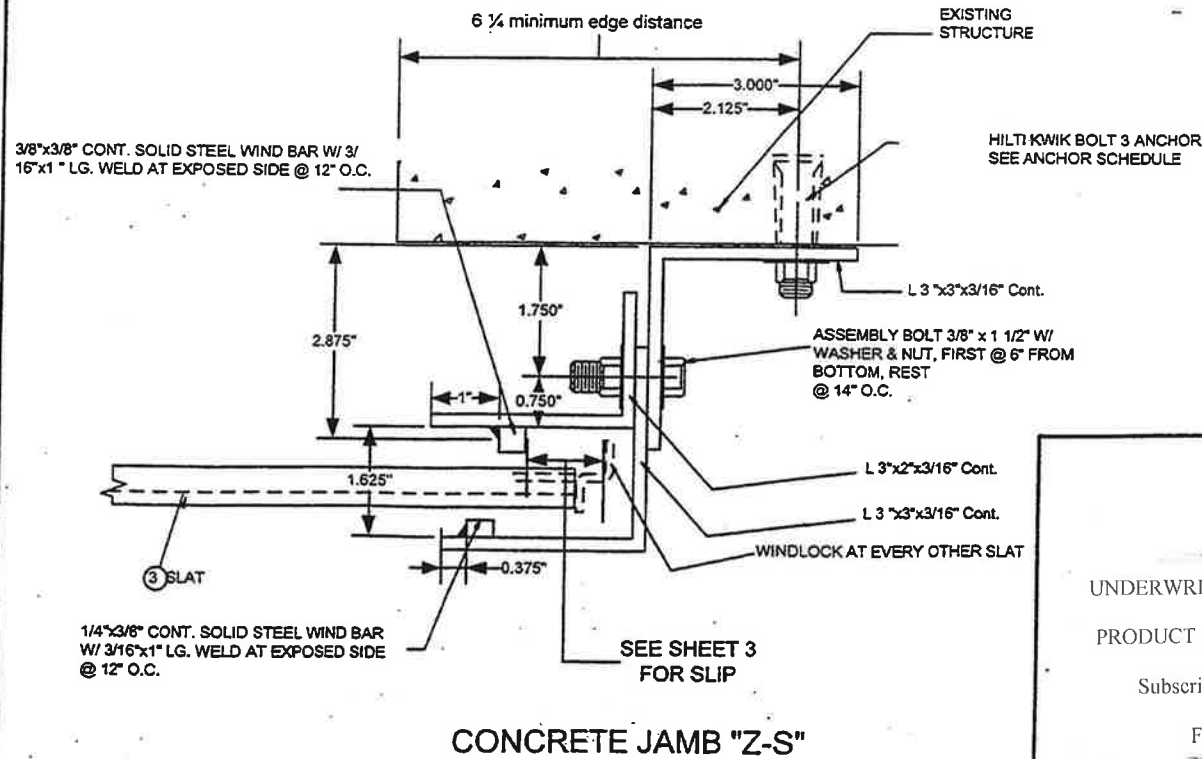
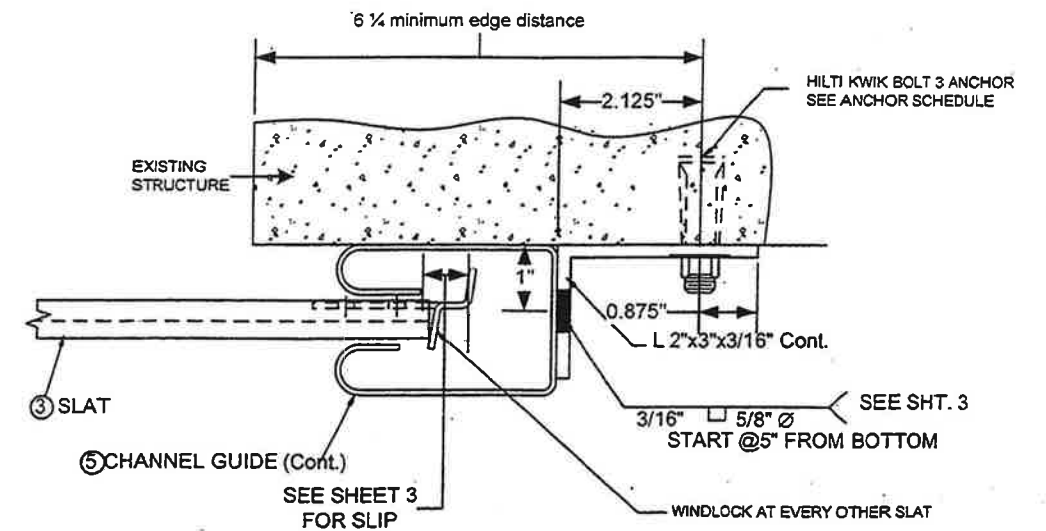
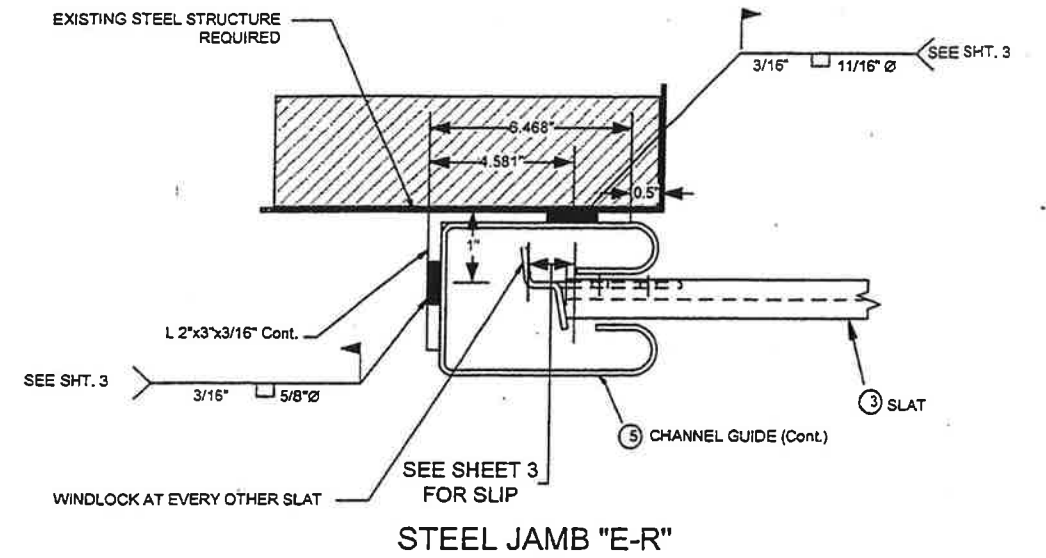


WINDLOCKS - DETAIL 4

UNDERWRITERS LABORATORIES INC. PRODUCT (Fire Door) Rolling Steel Type Subscriber - Factory 706023-001 File Number R21245	 11/15/08	FIRE RATING 3 HOURS		ENG. NAME: JOSEPH H. DIXON JR. FL 7768	
		BEST ROLLING DOOR, MFG 9780 N.W. 79th AVENUE HIALEAH GARDENS, FLORIDA 33016 PH: 305-698-3550 FAX: 305-698-3552 www.bestdoor.us		Model F45 S10 (-60+65)	
		DRAWN BY B.D.	DATE 02/25/08	DRAWN No 6065_2008_01	SHEET 1 OF 4



CHANNEL GUIDE - DETAIL 5
Min. Yield Strength = 30,000 psi



UNDERWRITERS LABORATORIES INC.
PRODUCT (Fire Door) Rolling Steel Type
Subscriber - Factory 706023-001
File Number R21245

Handwritten signature and date
11/15/08

FIRE RATING
3 HOURS

BEST ROLLING DOOR, MFG

9780 N.W. 79th AVENUE
HIALEAH GARDENS, FLORIDA 33016
PH: 305-698-3550 FAX: 305-698-3552
www.bestdoor.us

ENG. NAME: JOSEPH H. DIXON JR. P.E.
FL 7768

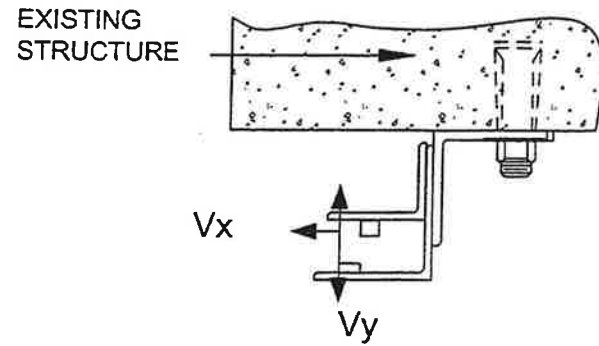
Model F45 S10 (-60+65)

DRAWN BY
B.D.

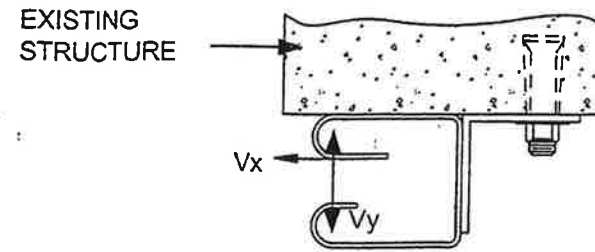
DATE
02/25/08

DRAWN No
6065_2008_01

SHEET 2 OF 4



LOAD DIAGRAM - MOUNTING 1



LOAD DIAGRAM - MOUNTING 2

DOOR OPENING WIDTH	SLIP each end in	ASSEMBLY BOLT	ANCHORS TO CONCRETE JAMB		FIELD WELD TO STEEL JAMB		
			Angle Guide	Channel Guide	Angle Guide	Channel Guide	
		Carriage Bolt	Hilti Kwik Bolt 3 dia. x embedment x spacing	Hilti Kwik Bolt 3 dia. x embedment x spacing	Plug Weld Wall Angle to Jamb	Plug Weld Wall Angle to Jamb	Plug Weld Channel to Wall Angle
24' 1-1/2"	1.00	1/2"-13 x 1-1/2" @ 14" o.c.	3/4" x 6-1/2" @ 4-3/4" o.c.	3/4" x 6-1/2" @ 10" o.c.	11/16" dia. x 3/16" @ 5-1/2" o.c.	11/16" dia. x 3/16" @ 14" o.c.	5/8" x 3/16" @ 4" o.c.
20'-0"	1.00	1/2"-13 x 1-1/2" @ 14" o.c.	3/4" x 6-1/2" @ 8" o.c.	3/4" x 6-1/2" @ 13" o.c.	11/16" dia. x 3/16" @ 7-1/2" o.c.	11/16" dia. x 3/16" @ 14" o.c.	5/8" x 3/16" @ 5" o.c.
16'-0"	1.00	1/2"-13 x 1-1/2" @ 14" o.c.	3/4" x 6-1/2" @ 13" o.c.	3/4" x 4-3/4" @ 14" o.c. or 5/8" x 4" @ 13" o.c.	11/16" dia. x 3/16" @ 11" o.c.	11/16" dia. x 3/16" @ 14" o.c.	5/8" x 3/16" @ 7" o.c.
14'-0"	1.00	1/2"-13 x 1-1/2" @ 14" o.c.	3/4" x 4-3/4" @ 14" o.c. or 5/8" x 5-1/2" @ 12" o.c.	3/4" x 3-1/4" @ 14" o.c. or 5/8" x 4" @ 14" o.c.	11/16" dia. x 3/16" @ 14" o.c.	11/16" dia. x 3/16" @ 14" o.c.	5/8" x 3/16" @ 8-1/2" o.c.
12'-0"	0.50	1/2"-13 x 1-1/2" @ 14" o.c.	3/4" x 3-1/4" @ 8-1/2" o.c. or 5/8" x 5-1/2" @ 11" o.c.	3/4" x 3-1/4" @ 14" o.c. or 5/8" x 5-1/2" @ 14" o.c.	1 1/16" dia. x 3/16" @ 13" o.c.	11/16" dia. x 3/16" @ 14" o.c.	5/8" x 3/16" @ 9" o.c.
10'-0"	0.50	1/2"-13 x 1-1/2" @ 14" o.c.	3/4" x 3-1/4" @ 14" o.c. or 5/8" x 5-1/2" @ 14" o.c.	3/4" x 3-1/4" @ 14" o.c. or 5/8" x 5-1/2" @ 14" o.c.	1 1/16" dia. x 3/16" @ 14" o.c.	11/16" dia. x 3/16" @ 14" o.c.	5/8" x 3/16" @ 13" o.c.

UNDERWRITERS LABORATORIES INC. PRODUCT (Fire Door) Rolling Steel Type Subscriber - Factory 706023-001 File Number R21245		FIRE RATING 3 HOURS		ENG. NAME: JOSEPH H. DIXON JR. P.E. FL 7768	
		BEST ROLLING DOOR, MFG 9780 N.W. 79th AVENUE HIALEAH GARDENS, FLORIDA 33016 PH: 305-698-3550 FAX: 305-698-3552 www.bestdoor.us		Model F45 S10 (-60+65)	
		DRAWN BY B.D. DATE 02/25/08.	DRAWN No 6065_2008_01 SHEET 3 OF 4		

DOOR OPENING WIDTH	SLIP each end in	Angles - E-Guides						Angles - Z-Guides					
		POSITIVE WIND			NEGATIVE WIND			POSITIVE WIND			NEGATIVE WIND		
		F1 plf	F2 plf	F3 plf	F1 plf	F2 plf	F3 plf	F1 plf	F2 plf	F3 plf	F1 plf	F2 plf	F3 plf
24' 1-1/2"	1.00	11609	10833	3486	16666	17453	3784	3819	3093	3486	7926	8713	3784
20'-0"	1.00	8584	7982	2574	12217	12870	2799	2737	2135	2574	5913	6566	2799
16'-0"	1.00	5814	5331	1738	8169	8691	1900	1755	1273	1738	4070	4593	1900
14'-0"	1.00	4456	4034	1329	6198	6655	1461	1276	853	1329	3171	3628	1461
12'-0"	0.50	4787	4424	1434	6869	7262	1582	1491	1129	1434	3359	3752	1582
10'-0"	0.50	2883	2581	858	4083	4411	971	787	484	858	2124	2452	971

DOOR OPENING WIDTH	SLIP each end in	C-Channel - C-Guides						C-Channel - Z-Guides					
		POSITIVE WIND			NEGATIVE WIND			POSITIVE WIND			NEGATIVE WIND		
		F1 plf	F2 plf	F3 plf	F1 plf	F2 plf	F3 plf	F1 plf	F2 plf	F3 plf	F1 plf	F2 plf	F3 plf
24' 1-1/2"	1.00	3478	2752	3486	7590	8377	3784	2042	1315	3486	1165	1952	3784
20'-0"	1.00	2599	1956	2574	5624	6276	2799	1952	1350	2574	862	1515	2799
16'-0"	1.00	1717	1235	1738	3828	4351	1900	1826	1344	1738	585	1108	1900
14'-0"	1.00	1306	883	1329	2952	3410	1461	1756	1333	1329	450	908	1461
12'-0"	0.50	1421	1059	1434	3182	3575	1582	1268	906	1434	487	990	1582
10'-0"	0.50	839	536	858	1966	2293	971	1333	1031	858	299	627	971

DOOR OPENING WIDTH	SLIP each end in	POSITIVE WIND			NEGATIVE WIND			C-Channel or Angle Guides			
		Pxp plf	Pyp plf	Ryp plf	Pxn plf	Pyn plf	Ryn plf	POSITIVE WIND		NEGATIVE WIND	
								Vx plf	Vy plf	Vx plf	Vy plf
24' 1-1/2"	1.00	- 3486	709	18	3784	769	18	3486	727	3784	787
20'-0"	1.00	2574	574	28	2799	625	28	2574	602	2799	653
16'-0"	1.00	1738	433	49	1900	474	49	1738	482	1900	523
14'-0"	1.00	1329	354	68	1461	389	68	1329	422	1461	457
12'-0"	0.50	1434	292	71	1582	322	71	1434	363	1582	393
10'-0"	0.50	858	191	111	971	216	111	858	302	971	327

Refer to Fenestration Testing Laboratory Lab No: 4845, reissued 10/24/06, for 20-gage steel slat door, 24' 1-1/2" wide, +60 / -65 psf
Doors manufactured by Best Rolling Doors, Hialeah Gardens, Florida
Calculations by Joseph H. Dixon, Jr. P.E. dated 11/16/07 except 10' & 12' wide dated 6/18/08

UNDERWRITERS LABORATORIES INC.
PRODUCT (Fire Door) Rolling Steel Type
Subscriber - Factory 706023-001
File Number R21245

JH Dixon Jr
11/15/08

FIRE RATING
3 HOURS

BEST ROLLING DOOR, MFG

9780 N.W. 79th AVENUE
HIALEAH GARDENS, FLORIDA 33016
PH: 305-698-3550 FAX: 305-698-3552
www.bestdoor.us

ENG. NAME: JOSEPH H. DIXON JR. P.E.
FL 7763

Model F45 S10 (-60+65)

DRAWN BY
B.D.

DATE
02/25/08

DRAWN No
6065_2008_01

SHEET 4 OF 4